

ASTRO STATION · SAMPLE

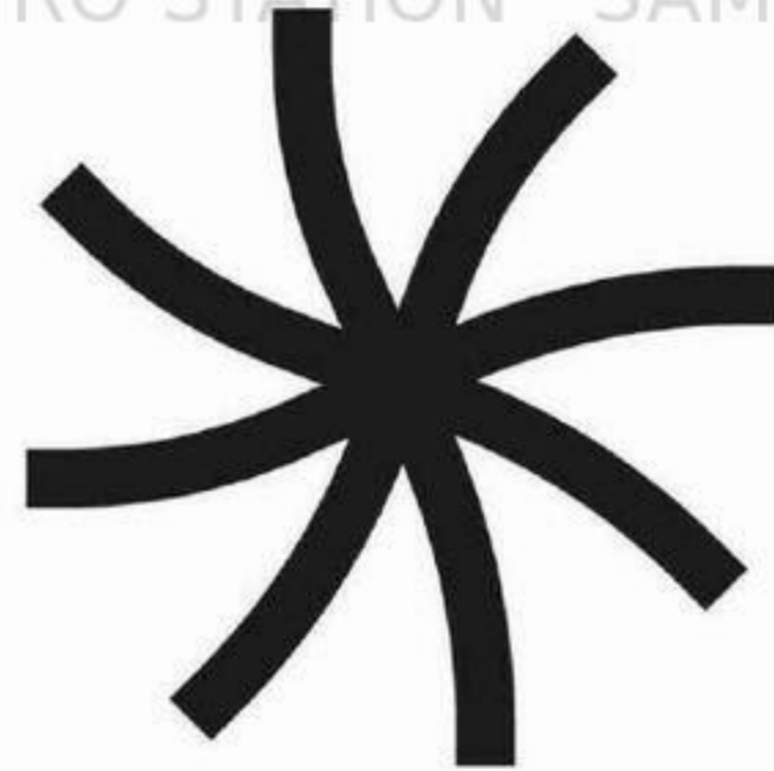
ASTRO STATION · SAMPLE

ASTRO STATION · SAMPLE

ASTRO STATION · SAMPLE

ASTRO STATION · SAMPLE

ASTRO STATION · SAMPLE



ASTRO STATION · SAMPLE

ASTRO STATION · SAMPLE

ASTRO STATION · SAMPLE

**PROJECT:** Buddha Project

**CLIENT:** Owner

**AREA:**

ASTRO STATION · SAMPLE

ASTRO STATION · SAMPLE

ASTRO STATION · SAMPLE

ASTRO STATION · SAMPLE

ASTRO STATION · SAMPLE

ASTRO STATION · SAMPLE



ASTRO STATION · SAMPLE

ASTRO STATION<sup>01</sup> · SAMPLE  
Architectural Documentation

ASTRO STATION · SAMPLE

ASTRO STATION · SAMPLE

ASTRO STATION · SAMPLE  
Buddha Project | Astro Station

ASTRO STATION · SAMPLE

**DATE**

March 27 2026

**PROJECT**

Buddha Project

**CONTAINS**

Content

**SCALE**

**DRAWN BY**

David Castrillon

Maria Ines Bernal

Vanessa Sierra

Andrea Rodriguez

Verify measurements on site

Any modification must be communicated to the design architect, otherwise, this does not have any responsibility about it.

All the structural elements must be previously verified by the calculator to guarantee the resistance and good behavior of the work.

The specifications expressed here are served as a reference and do not have any link or commitment with a predetermined distributor, on the contrary, they are served as the basis to quantify the budget.

This plan cancels the previous one.

1.Architecture	
Sheet Number	Sheet Name
A102	3D
A103	Mood Board
A104	Final design Sheet 1/2
A105	Final design Sheet 2/2
A106	Ground Level
A107	Level 1
A108	Level 2
A109	Roof
A110	Elevation 1 Elevation 2
A111	Elevation 3 Elevation 4
A112	Section A-A' Section B-B'
A113	Section C-C' Section D-D' Section E-E'
A114	Wall Section E-E' Wall Section B-B'

Total: 13

2.Quantities	
Sheet Number	Sheet Name
Q200	Ceilings Ground Level & Level 1
Q201	Ceilings Ground Floor & Level 1
Q202	Ceilings Level 2 & Roof
Q203	Ceilings Level 2 & Roof
Q204	Flooring Ground Level & Level 1
Q205	Flooring Level 2 & Roof
Q206	Wall Finish Ground Level & Level 1
Q207	Wall Finish Level 2 & Roof
Q208	Landscaping Ground Level Sheet 1/4
Q209	Landscaping Ground Level Sheet 2/4
Q210	Landscaping Level 1 Sheet 3/4
Q211	Landscaping Level 2 Sheet 4/4
Q212	Baseboard Ground Level & Level 1
Q213	Baseboard Level 2 & Roof
Q214	Fixed Furniture Ground Level & Level 1
Q215	Fixed Furniture Level 2 & Roof
Q216	Windows Sheet 1/4
Q217	Windows Sheet 2/4
Q218	Windows Sheet 3/4
Q219	Windows Sheet 4/4

Total: 20

3.Technical	
Sheet Number	Sheet Name
T300	Gas
T301	Lighting Gound Level & Level 1
T302	Lighting Level 2 & Roof
T303	RCP Gound Level & Level 1
T304	RCP Level 2 & Roof
T305	Electrical Circuit Gound Level & Level 1
T306	Electrical Circuit Level 2 & Roof
T307	Electrical Network Gound Level & Level 1
T308	Electrical Network Level 2 & Roof
T309	Hydraulic Rough Level 1
T310	Hydraulic Rough Level 2
T311	Pool Equipment

Total: 12

4.Details	
Sheet Number	Sheet Name
D400	Baths Materials
D401	Bath 1
D402	Bath 2
D403	Bath 1 & 2 Isometric
D404	Bath 3
D405	Bath 4
D406	Bath 3 & 4 Isometric
D407	Powder
D408	Primary Bath Materials
D409	Primary Bath
D410	Primary Bath
D411	Primary Bath Isometric
D412	Mirrors
D413	Bath Enclosure
D414	Exterior Stairs
D415	Main Stair Sheet 1/4
D416	Main Stair Sheet 2/4
D417	Main Stair Sheet 3/4
D418	Main Stair Sheet 4/4
D419	Handrail
D420	Planters
D421	Metal cladding facade Sheet 1/2
D422	Metal cladding facade Sheet 2/2
D423	Metal Supports Sheet 1/2
D424	Metal Supports Sheet 2/2
D425	Metal Beams
D426	Fence
D427	Front gate
D428	Driveway
D429	Pool

Total: 30

5.Milwork	
Sheet Number	Sheet Name
M500	Milwork Location
M501	Milwork Location
M502	Kitchen Sheet 1/5
M503	Kitchen Sheet 2/5
M504	Kitchen Sheet 3/5
M505	Kitchen Sheet 4/5
M506	Kitchen Sheet 5/5
M507	Bbq
M508	Pantry
M509	Laundry Level 1
M510	W.I.C Bedroom 1 & Staff
M511	Family & Living
M512	Primary W.I.C Sheet 1/4
M513	Primary W.I.C Sheet 2/4
M514	Primary W.I.C Sheet 3/4
M515	Primary W.I.C Sheet 4/4
M516	Family Level 2
M517	W.I.C-Bedroom 4
M518	Desk & Louvers
M519	W.I.C-Bedroom 3
M520	Closet Bedroom 2
M521	Laundry Level 2
M522	Vanities Sheet 1/3
M523	Vanities Sheet 2/3
M524	Vanities Sheet 3/3
M525	Storage
M526	Stair element
M527	Panel Location
M528	Panels 1 & 2 - Level 1
M529	Panels 3 - Level 1
M530	Panels 4 & 5 - Level 1 & 2
M531	Panels 6 & 7 - Level 2
M532	Panels 8 - Level 2
M533	Panels 9 - Level 2
M534	Doors Sheet 1/3
M535	Doors Sheet 2/3
M536	Doors Sheet 3/3

Total: 37



DATE

March 27 2026

PROJECT

Buddha Project

CONTAINS

Mood Board

SCALE

DRAWN BY

David Castrillon

Maria Ines Bernal

Vanessa Sierra

Andrea Rodriguez

Verify measurements on site

Any modification must be communicated to the design architect, otherwise, this does not have any responsibility about it.

All the structural elements must be previously verified by the calculator to guarantee the resistance and good behavior of the work.

The specifications expressed here are served as a reference and do not have any link or commitment with a predetermined distributor, on the contrary, they are served as the basis to quantify the budget.

This plan cancels the previous one.

**BUDDHA HOUSE** \*



**DATE**

March 27 2026

**PROJECT**

Buddha Project

**CONTAINS**

Final design

Sheet 1/2

**SCALE**

**DRAWN BY**

David Castrillon

Maria Ines Bernal

Vanessa Sierra

Andrea Rodriguez

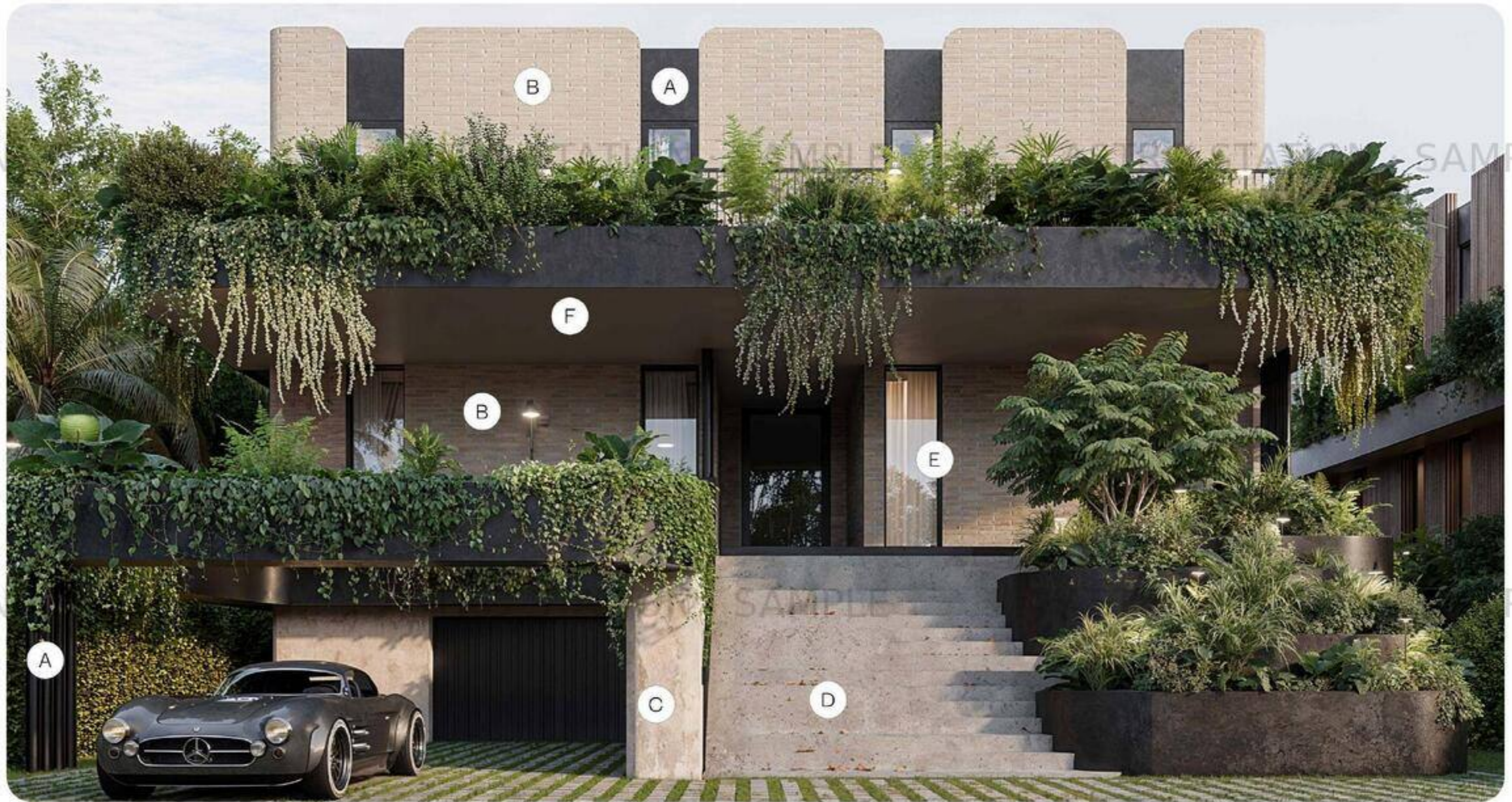
Verify measurements on site

Any modification must be communicated to the design architect, otherwise, this does not have any responsibility about it.

All the structural elements must be previously verified by the calculist to guarantee the resistance and good behavior of the work.

The specifications expressed here are served as a reference and do not have any link or commitment with a predetermined distributor, on the contrary, they are served as the basis to quantify the budget.

This plan cancels the previous one.



Reference: Black of Night  
(SW 6993)  
Supplier: Sherwin-Williams



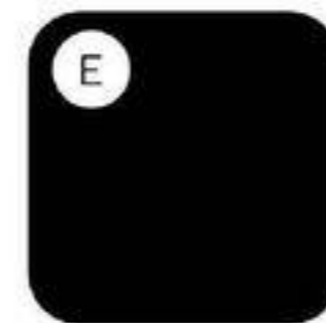
Reference: Shell Reef  
6" x 15" x 3/4"



Reference: Beige  
Microcement



Reference:  
Polish Concrete



Reference: Black 2604  
Supplier: EsWindows



Reference: Bungalow  
beige (SW 7511)  
Supplier: Sherwin-Williams

DATE

March 27 2026

PROJECT

Buddha Project

CONTAINS

Final design

Sheet 2/2

SCALE

DRAWN BY

David Castrillon

Maria Ines Bernal

Vanessa Sierra

Andrea Rodriguez

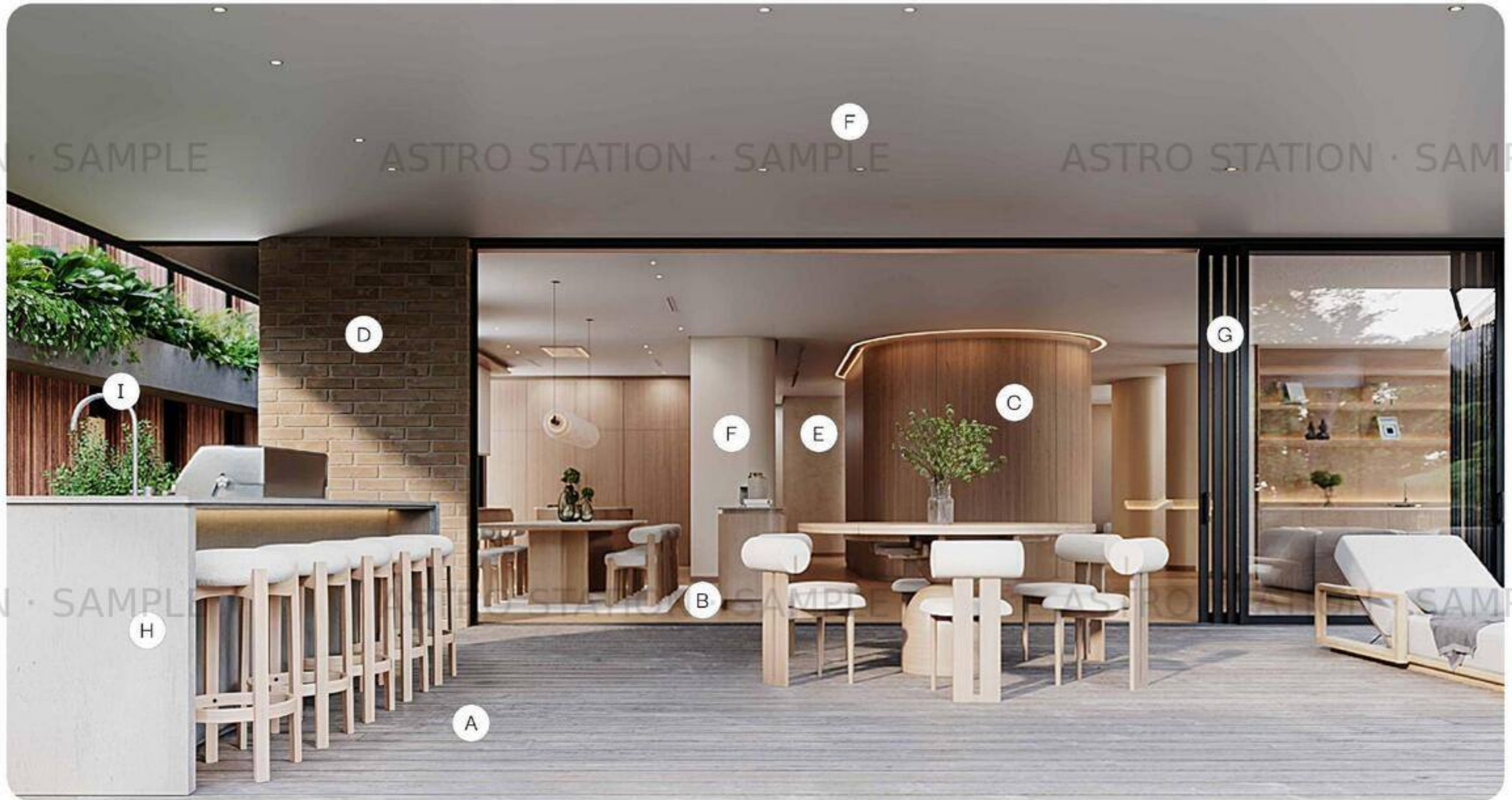
Verify measurements on site

Any modification must be communicated to the design architect, otherwise, this does not have any responsibility about it.

All the structural elements must be previously verified by the calculist to guarantee the resistance and good behavior of the work.

The specifications expressed here are served as a reference and do not have any link or commitment with a predetermined distributor, on the contrary, they are served as the basis to quantify the budget.

This plan cancels the previous one.



Reference: IPE wood  
Supplier: Cedro Rojo



Referencia: Bora 10oak  
Supplier: Yvyra



Reference: Light Vicenza Oak  
Supplier: Egger



Reference: Shell Reef  
6" x 15" x 3/4"



Reference: Beige  
Microcement



Reference: Bungalow  
beige (SW 7511)  
Supplier: Sherwin-Williams



Reference: Black 2604  
Supplier: Eswindows



Reference: Azul  
antiqued - honed  
Supplier: Innovative surfaces



Finish: Stainless Steel Optic





DATE

March 27 2026

PROJECT  
Buddha Project

CONTAINS  
Ground Level

SCALE  
3/16" = 1'-0"

DRAWN BY  
David Castrillon  
Maria Ines Bernal  
Vanessa Sierra  
Andrea Rodriguez

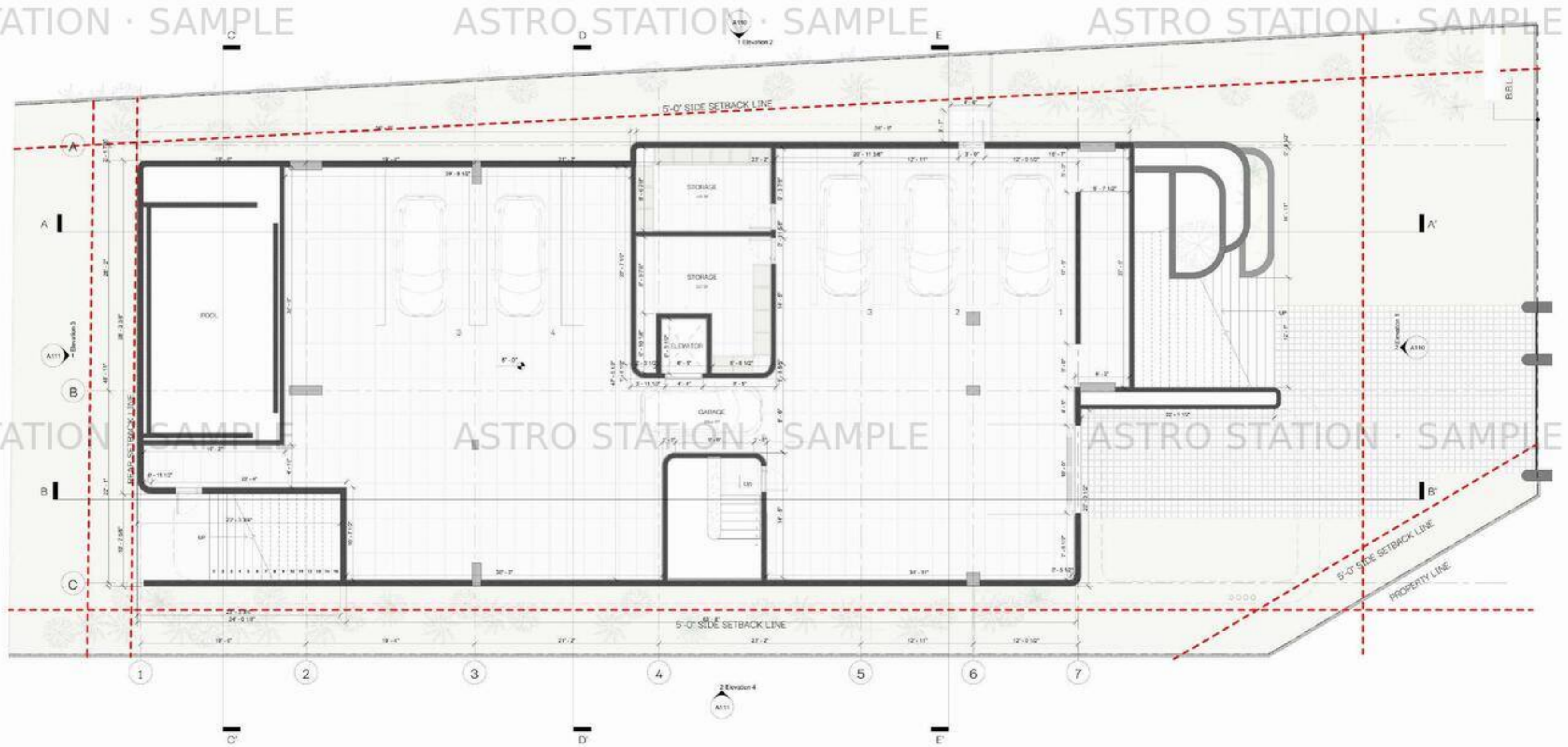
Verify measurements on site

Any modification must be communicated to the design architect, otherwise, this does not have any responsibility about it.

All the structural elements must be previously verified by the calculist to guarantee the resistance and good behavior of the work.

The specifications expressed here are served as a reference and do not have any link or commitment with a predetermined distributor, on the contrary, they are served as the basis to quantify the budget.

This plan cancels the previous one.



**DATE**

March 27 2026

**PROJECT**

Buddha Project

**CONTAINS**

Elevation 1

Elevation 2

**SCALE**

As Indicated

**DRAWN BY**

David Castrillon

Maria Ines Bernal

Vanessa Sierra

Andrea Rodriguez

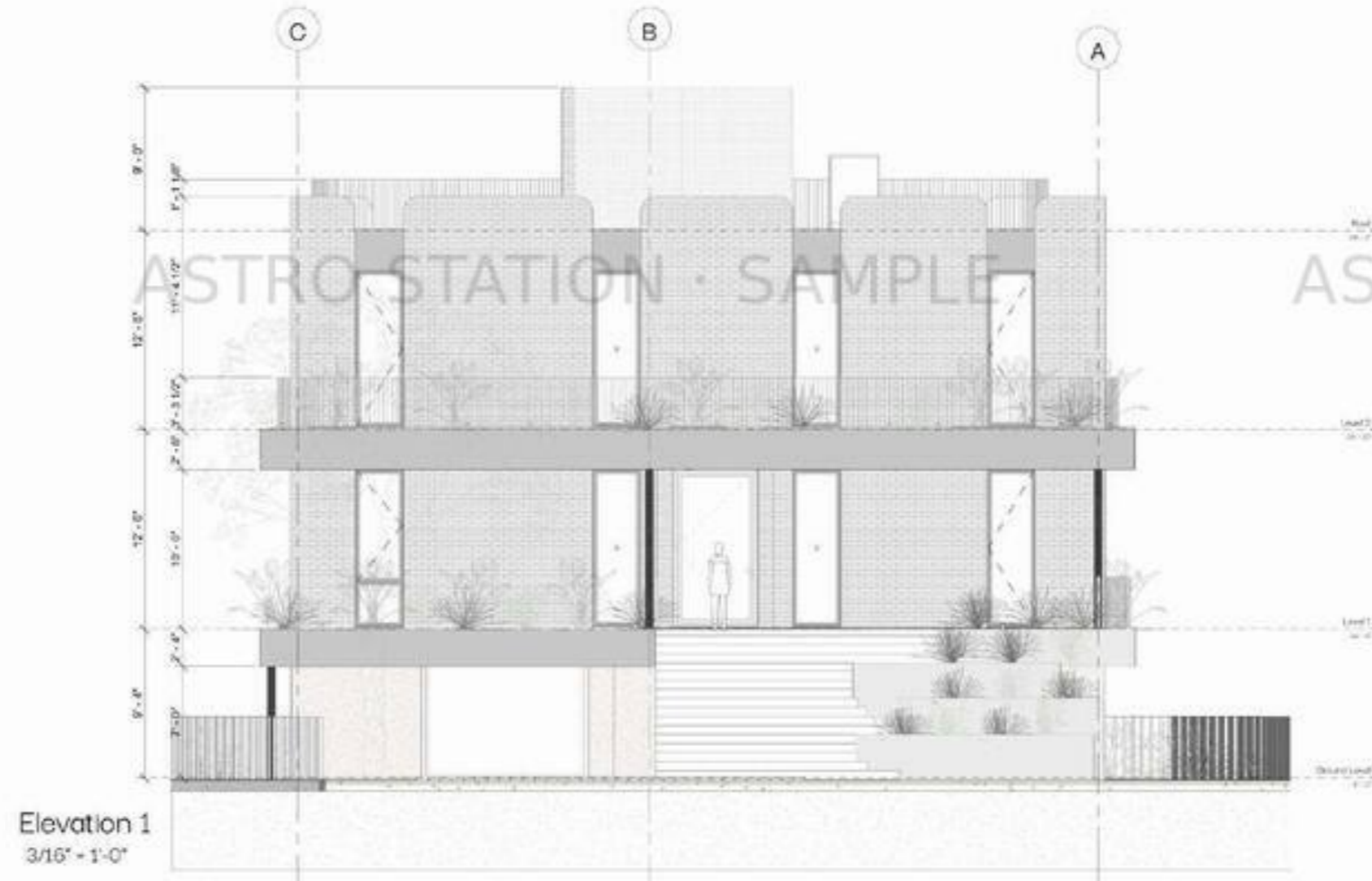
Verify measurements on site

Any modification must be communicated to the design architect, otherwise, this does not have any responsibility about it.

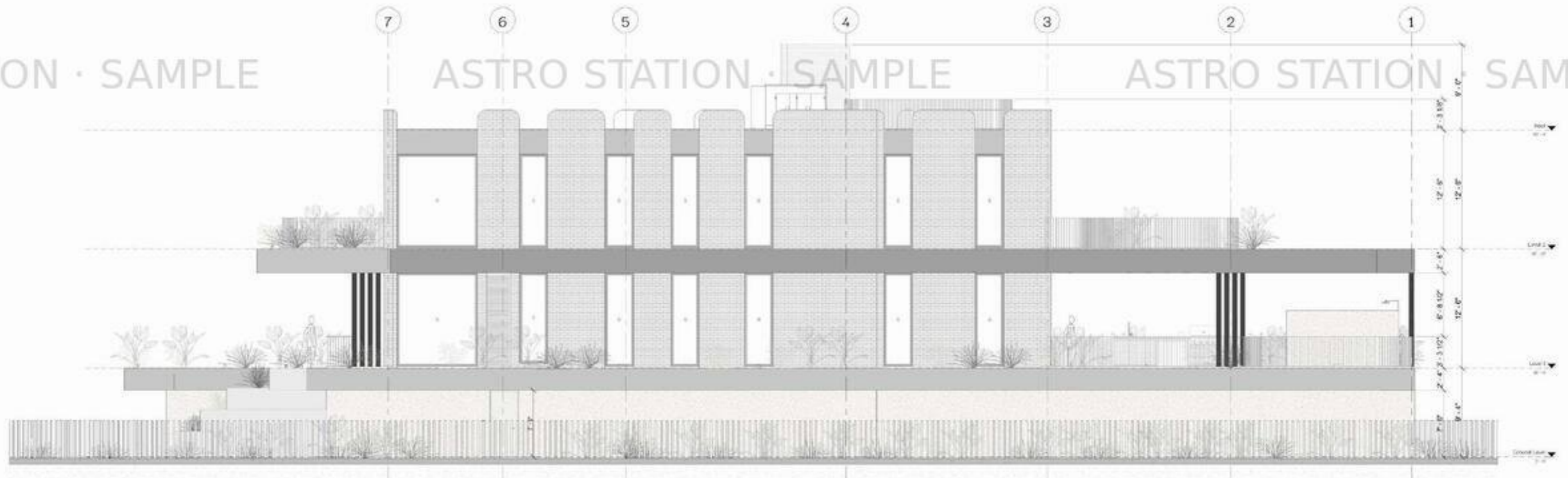
All the structural elements must be previously verified by the calculist to guarantee the resistance and good behavior of the work.

The specifications expressed here are served as a reference and do not have any link or commitment with a predetermined distributor, on the contrary, they are served as the basis to quantify the budget.

This plan cancels the previous one.



Elevation 1  
3/16" = 1'-0"



Elevation 2  
3/16" = 1'-0"



DATE

March 27 2026

PROJECT

Buddha Project

CONTAINS

Wall Section E-E'

Wall Section B-B'

SCALE

As Indicated

DRAWN BY

David Castrillon

Maria Ines Bernal

Vanessa Sierra

Andrea Rodriguez

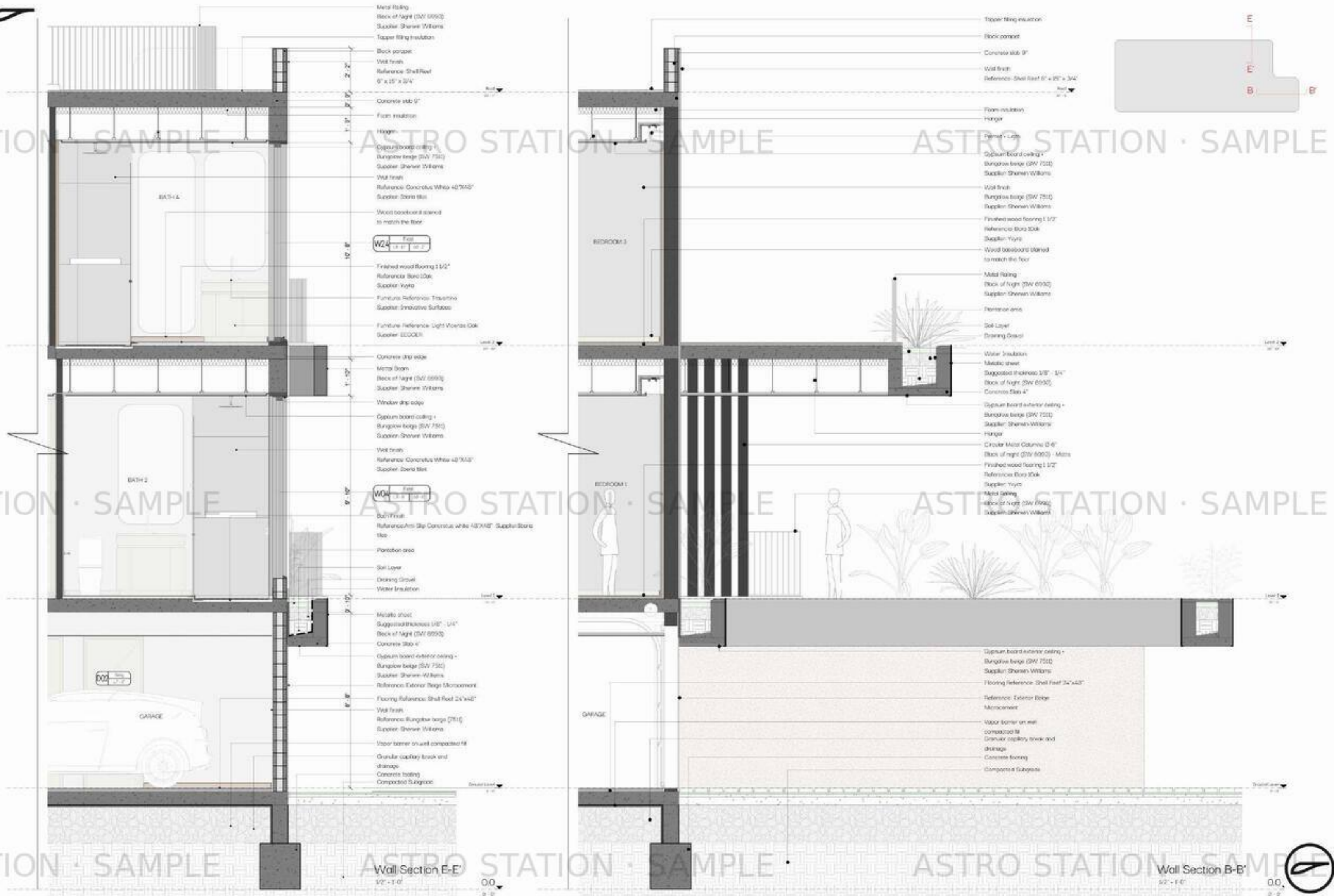
Verify measurements on site

Any modification must be communicated to the design architect, otherwise, this does not have any responsibility about it.

All the structural elements must be previously verified by the calculist to guarantee the resistance and good behavior of the work.

The specifications expressed here are served as a reference and do not have any link or commitment with a predetermined distributor, on the contrary, they are served as the basis to quantify the budget.

This plan cancels the previous one.



DATE

March 27 2026

PROJECT

Budha Project

CONTAINS

Lighting Level 2 &  
Roof

SCALE

As Indicated

DRAWN BY

David Castrillon

Maria Ines Bernal

Vanessa Sierra

Andrea Rodriguez

Verify measurements on site

Any modification must be communicated to the design architect, otherwise, this does not have any responsibility about it.

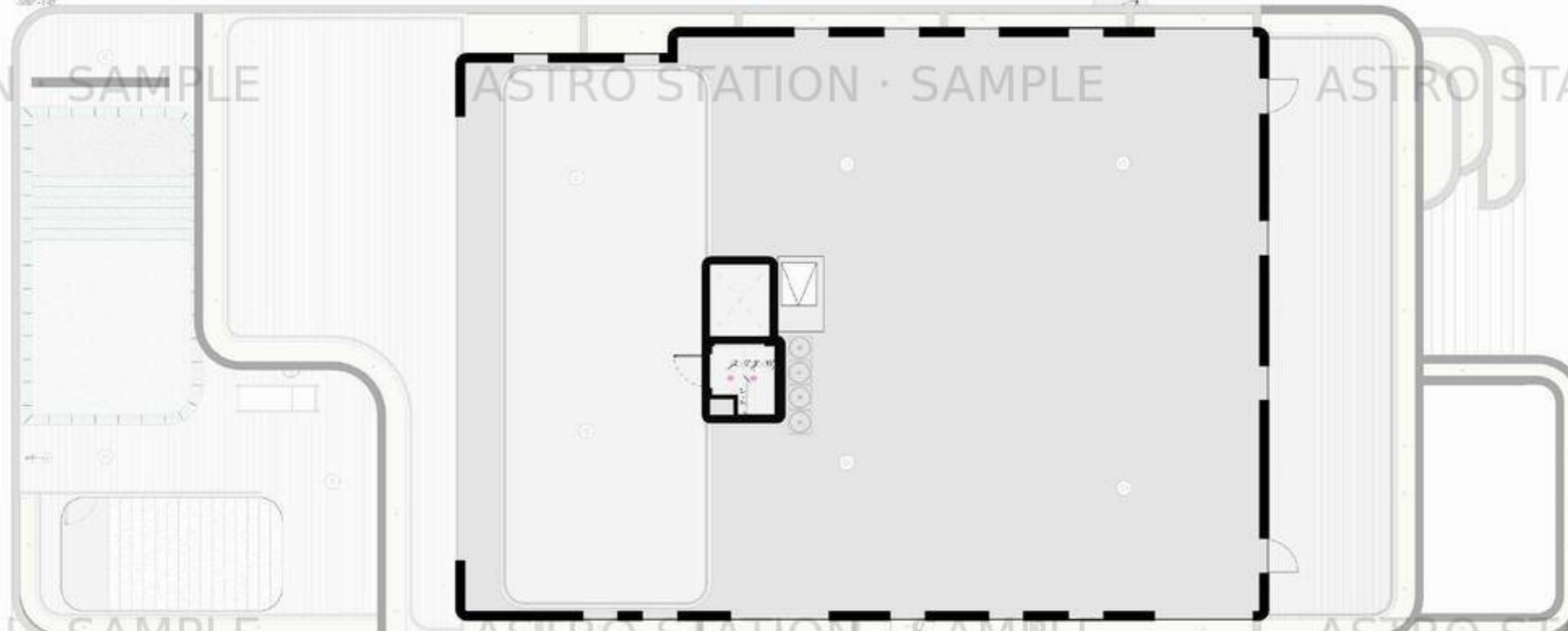
All the structural elements must be previously verified by the calculator to guarantee the resistance and good behavior of the work.

The specifications expressed here are served as a reference and do not have any link or commitment with a predetermined distributor, on the contrary, they are served as the basis to quantify the budget.

This plan cancels the previous one.



Level 2 Lighting  
04/27/26



Roof Lighting  
04/27/26

- NOTE 1: Add lighting to permits, it was not included in the MEP.
- NOTE 2: Add lighting outlets in network, not included in the MEP.
- NOTE 3: Add exterior garden and pool lighting.
- NOTE 4: Add lighting outlets in car, not included in the MEP.
- NOTE 5: Add lighting outlets interior, not included in the MEP.

ICON	NAME	QTY
	Ceiling Output Palmer	0
	Ceiling Output Recessed	240
	Ceiling Output LED Light	17
	Ceiling Output Pendant	6
	Ceiling Output Spotlight	6
	Floor Output	11
	Floor Output Vegetation Light	50
	Wall Output Furniture	22
	Wall Output Mirror Light	15
	Wall Output Well Sconce	2

	Ceiling led light
	Wall - Furniture-Mirror led light
	Floor led light
	Pendant Pending to be defined

It is suggested that the luminaires be of:

- |                  |                     |
|------------------|---------------------|
| 3000K            | 2700K               |
| - Baths          | - Rest of the house |
| - Walk in closet |                     |
| - Pantry         |                     |
| - Laundry        |                     |

The person in charge of installing the lighting may make suggestions necessary for the correct operation each space.

The location and height of the led tops in furniture may vary depending on the design.

- Kitchen
- Vanities
- Walk in closets

If you have to locate another objects in the ceiling, please consult the location with the architect.



DATE

March 27 2026

PROJECT

Budha Project

CONTAINS

Electrical Circuit  
Ground Level &  
Level 1

SCALE

As Indicated

DRAWN BY

David Castrillon

Maria Ines Bernal

Vanessa Sierra

Andrea Rodriguez

Verify measurements on site

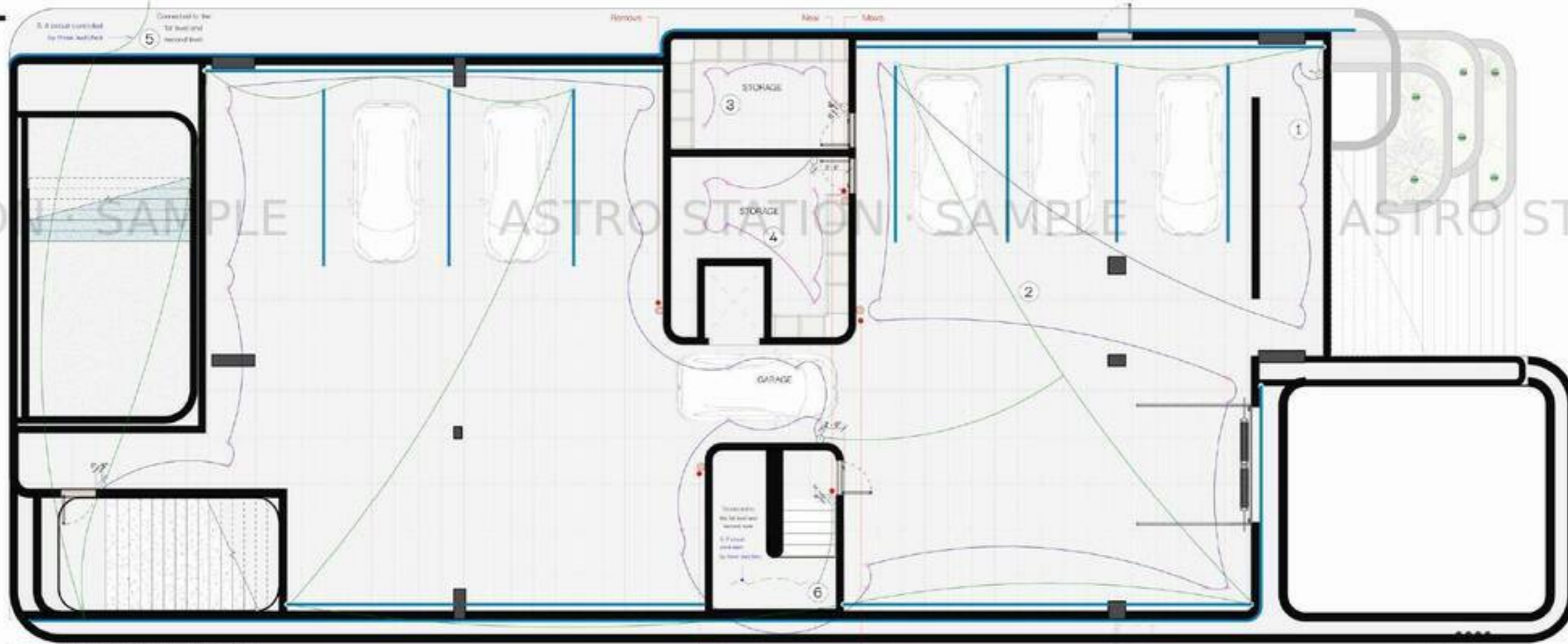
Any modification must be communicated to the design architect, otherwise, this does not have any responsibility about it.

All the structural elements must be previously verified by the calculator to guarantee the resistance and good behavior of the work.

The specifications expressed here are served as a reference and do not have any link or commitment with a predetermined distributor, on the contrary, they are served as the basis to quantify the budget.

This plan cancels the previous one.

SHEET NUMBER  
T305



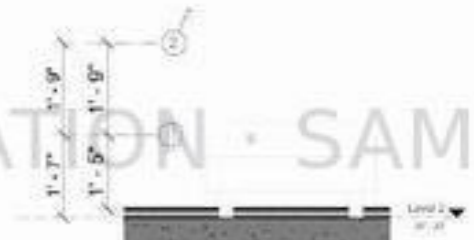
Ground Level Lighting Distribution Zones

3/27 - 1/2"



Level 1 Lighting Distribution Zones

3/27 - 1/2"



Nightstand Detail  
1/2" - 1'-0"

SWITCHES			
ICON	NAME	UNIT	HEIGHT
1	SWITCHES 1 CIRCUIT	11	3'-6"
2	SWITCHES 2 CIRCUIT	28	3'-6"
3	SWITCHES 3 CIRCUIT	13	3'-6"
4	SWITCHES 4 CIRCUIT	3	3'-6"

NOTE 1: The person in charge of installing the lighting may make suggestions necessary for the correct operation of each space.

NOTE 2: Choose the switches, outlets, and other accessories with the architect according to the control system selected for electricity and lighting.

NOTE 3: Select the persons with the supplier according to the lighting system chosen for the room.

Note 4:  
6 Stair and handrail circuits are connected from Basement to Level 2.

5 Landscaping, terrace, and basement facade circuits are connected from the Basement to Level 2.

Note 5:  
New circuits have been coded to existing switches to accommodate additional lighting outlets in the following areas:  
- Basement facade  
- Basement LED ceiling lighting  
- Stance (access)  
- Landscaping  
- Pool  
- A/C units  
- Terraces  
- Handrail  
- Mirrors  
- Perimeters (curtain lighting)  
- Millwork  
- Fan



ASTRO STATION · SAMPLE

ASTRO STATION · SAMPLE

ASTRO STATION · SAMPLE



ASTRO STATION · SAMPLE

ASTRO STATION · SAMPLE  
03  
Architectural Details

ASTRO STATION · SAMPLE

ASTRO STATION · SAMPLE

ASTRO STATION · SAMPLE  
Buddha Project | Astro Station

ASTRO STATION · SAMPLE

DATE

March 27 2026

PROJECT

Budaha Project

CONTAINS

Bath 1

SCALE

As Indicated

DRAWN BY

David Castrillon

Maria Ines Bernal

Vanessa Sierra

Andrea Rodriguez

Verify measurements on site

Any modification must be communicated to the design architect, otherwise, this does not have any responsibility about it.

All the structural elements must be previously verified by the calculist to guarantee the resistance and good behavior of the work.

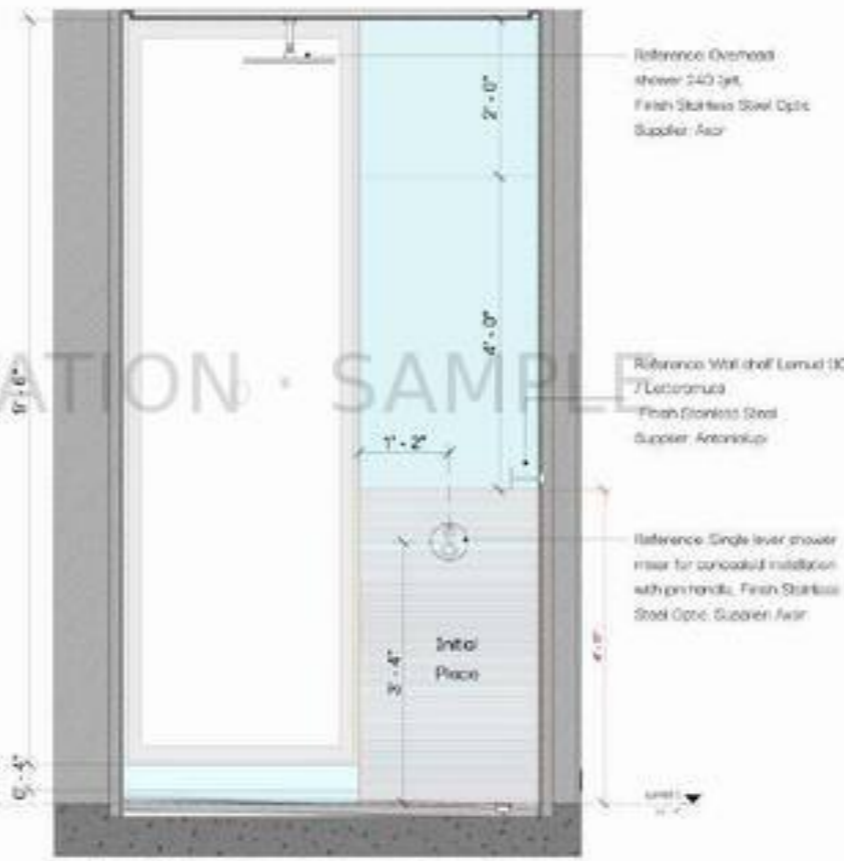
The specifications expressed here are served as a reference and do not have any link or commitment with a predetermined distributor, on the contrary, they are served as the basis to quantify the budget.

This plan cancels the previous one.



Bath 1  
1" = 1'-0"

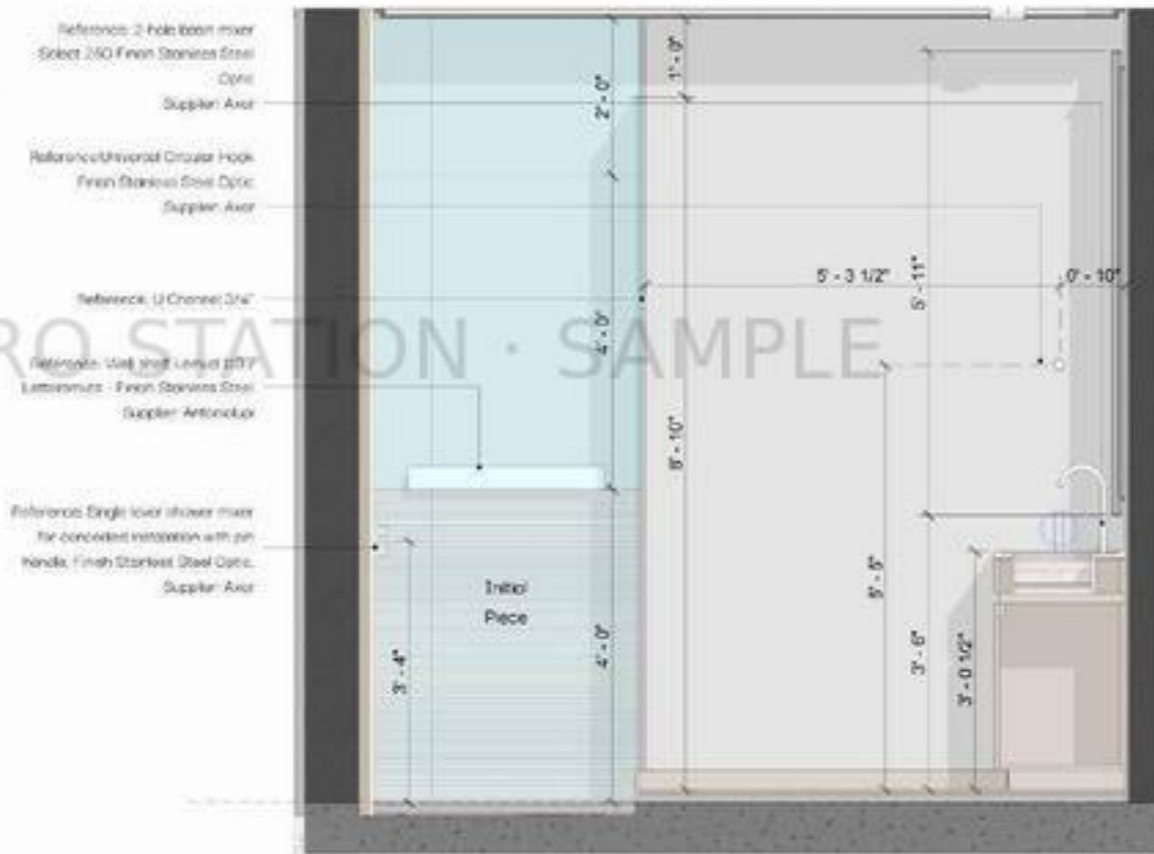
We suggest moving the drain and the mixer



Section A-A'  
3/4" = 1'-0"



Section B-B'  
3/4" = 1'-0"

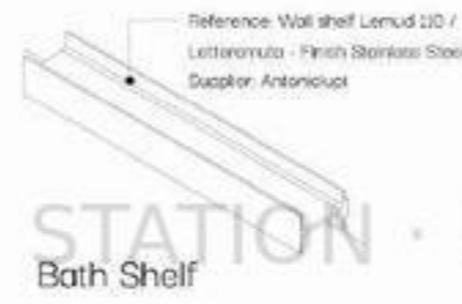


Section C-C'  
3/4" = 1'-0"



Section D-D'  
3/4" = 1'-0"

DETAILS



NOTE  
Hidden LED lighting

SHEET NUMBER  
D401

Be aware of the following outlets

ICON	NAME
	Electrical Wall Outlet
	Wall Switch
	Wall Light

WALLS-FLOORING			
COLOR	IMAGE	MATERIAL - DESCRIPTION	AREA
		Reference: Anti-Slip Concrete White 48"x48" Supplier: Iberia tiles	17.90 SF
		Reference: Concrete White 48"x48" Supplier: Iberia tiles	92.75 SF
		Inlet modulation piece	



DATE

March 27 2026

PROJECT

Buddha Project

CONTAINS

Bath 3

SCALE

As Indicated

DRAWN BY

David Castrillon

Maria Ines Bernal

Vanessa Sierra

Andrea Rodriguez

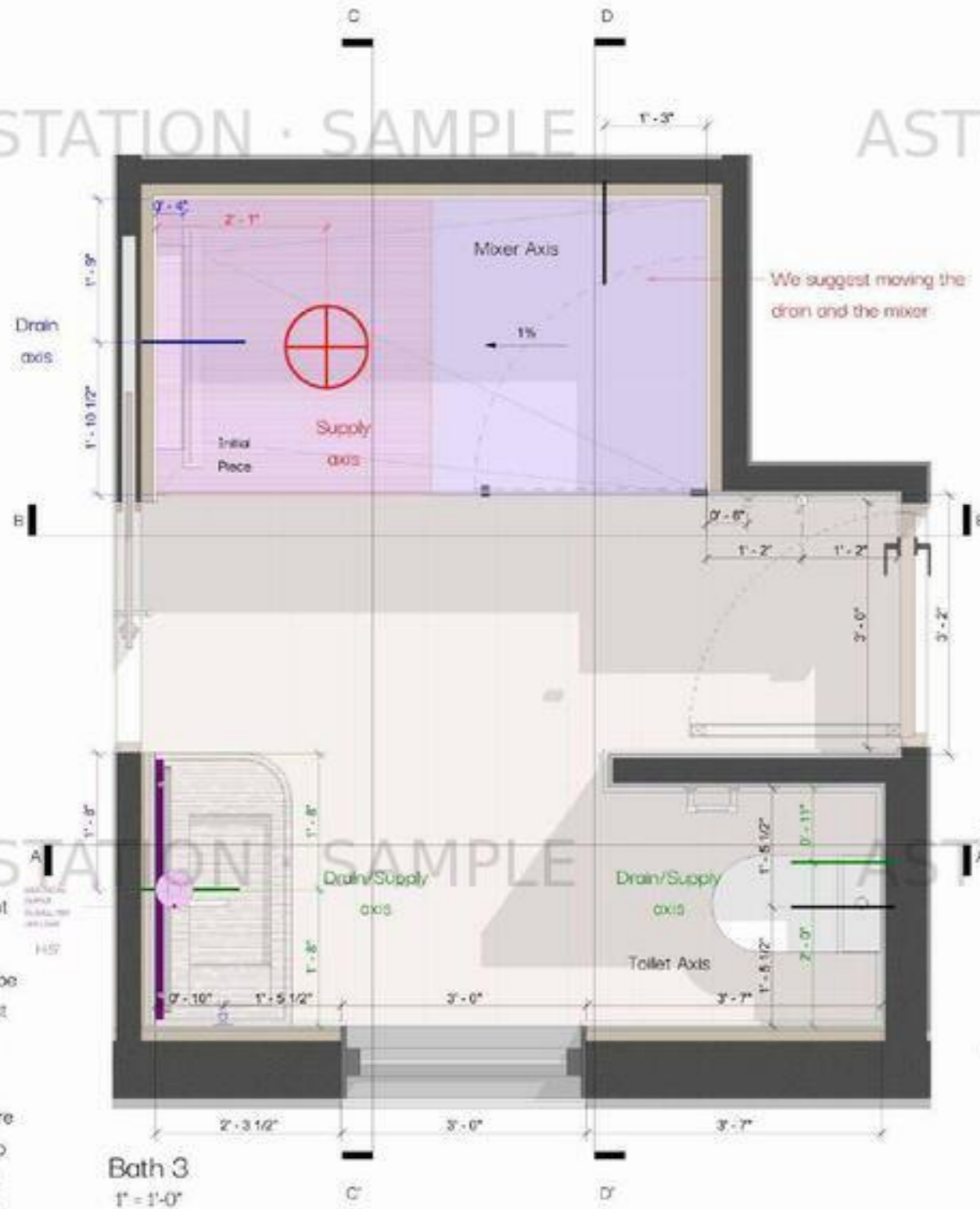
Verify measurements on site

Any modification must be communicated to the design architect, otherwise, this does not have any responsibility about it.

All the structural elements must be previously verified by the calculist to guarantee the resistance and good behavior of the work.

The specifications expressed here are served as a reference and do not have any link or commitment with a predetermined distributor, on the contrary, they are served as the basis to quantify the budget.

This plan cancels the previous one.



Reference Universal Circular Hook  
Finish Stainless Steel Optic  
Supplier: Axor

Reference 2-hole basin mixer Select 260 Finish Stainless Steel Optic  
Supplier: Axor

Reference ME By Starck Complete Single Flush Left Porcelain/White  
Supplier: the Bathroom Boutique



Section A-A'  
3/4" = 1'-0"

Reference Overhead shower 240 1jet, Finish Stainless Steel Optic  
Supplier: Axor

Reference Universal Circular Hook  
Finish Stainless Steel Optic  
Supplier: Axor

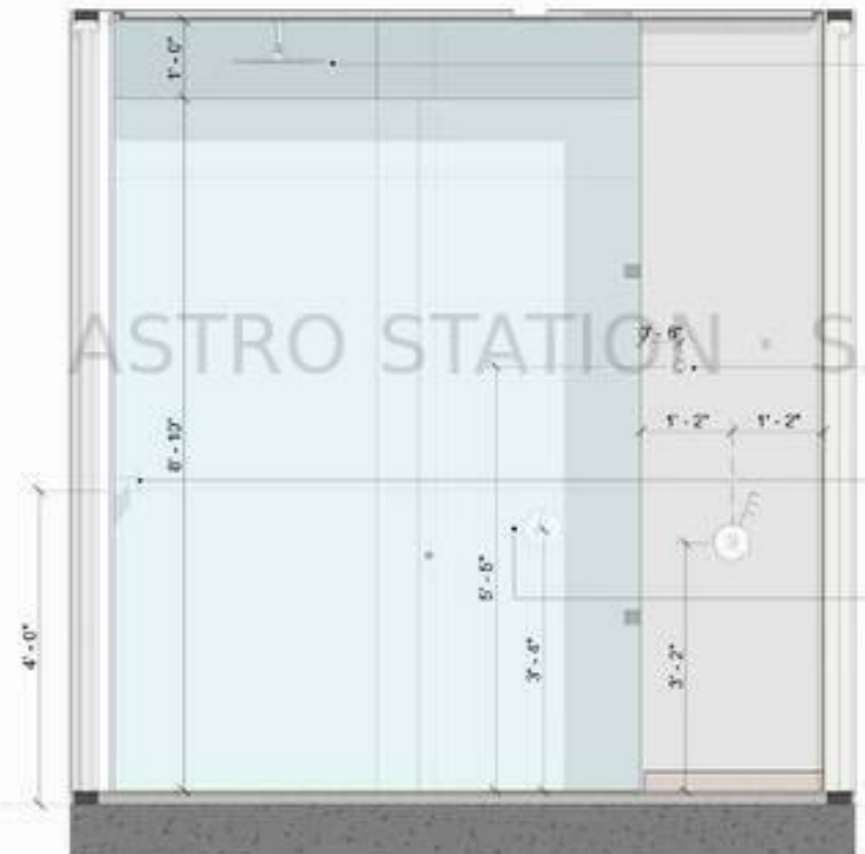
Reference 2-hole basin mixer Select 260 Finish Stainless Steel Optic  
Supplier: Axor

Reference Wall shelf Lemud 110 / Letteratura - Finish Stainless Steel  
Supplier: Antonolupi

Tempered Glass shower enclosure



Section C-C'  
3/4" = 1'-0"



Section B-B'  
3/4" = 1'-0"

Reference Overhead shower 240 1jet, Finish Stainless Steel Optic  
Supplier: Axor

Reference Universal Circular Hook  
Finish Stainless Steel Optic  
Supplier: Axor

Reference Wall shelf Lemud 110 / Letteratura - Finish Stainless Steel  
Supplier: Antonolupi

Reference Single lever shower mixer  
Finish Stainless Steel Optic  
Supplier: Axor

Reference Concrete White 48"x48"  
Supplier: Iberia Tiles

Reference Universal Circular Hook  
Finish Stainless Steel Optic  
Supplier: Axor

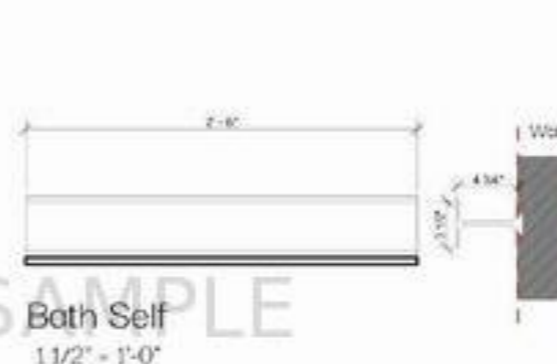
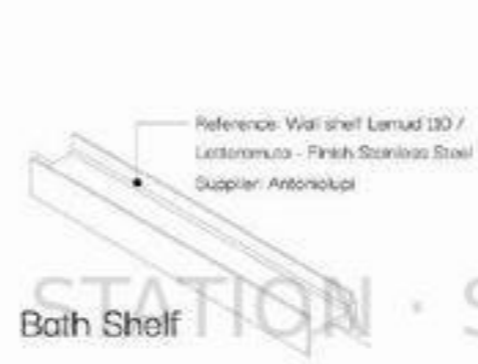
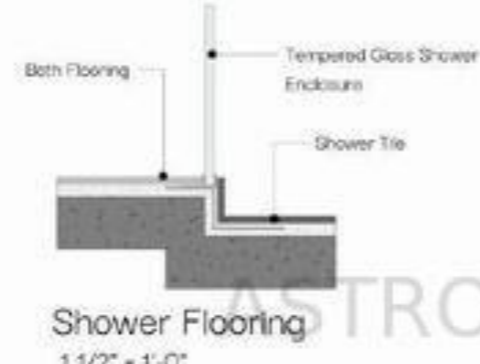
Reference Toilet paper holder, Finish Stainless Steel Optic  
Supplier: Axor

Reference ME By Starck Complete Single Flush Left Porcelain/White  
Supplier: the Bathroom Boutique

Initial Piece

Section D-D'  
3/4" = 1'-0"

DETAILS



Be aware of the following outlets

ICON	NAME
	Electrical Wall Outlet
	Wall Switch
	Wall Light

WALLS-FLOORING

COLOR	IMAGE	MATERIAL - DESCRIPTION	AREA
		Reference: Anti-Slip Concrete White 48"x48" Supplier: Iberia Tiles	24.35 SF
		Reference: Concrete White 48"x48" Supplier: Iberia Tiles	100.35 SF
		Initial modulation piece	

NOTE

Hidden LED lighting

SHEET NUMBER  
D404



**DATE**

March 27 2026

**PROJECT**

Budha Project

**CONTAINS**

Primary Bath

**SCALE**

As Indicated

**DRAWN BY**

David Castrillon

Maria Ines Bernal

Vanessa Sierra

Andrea Rodriguez

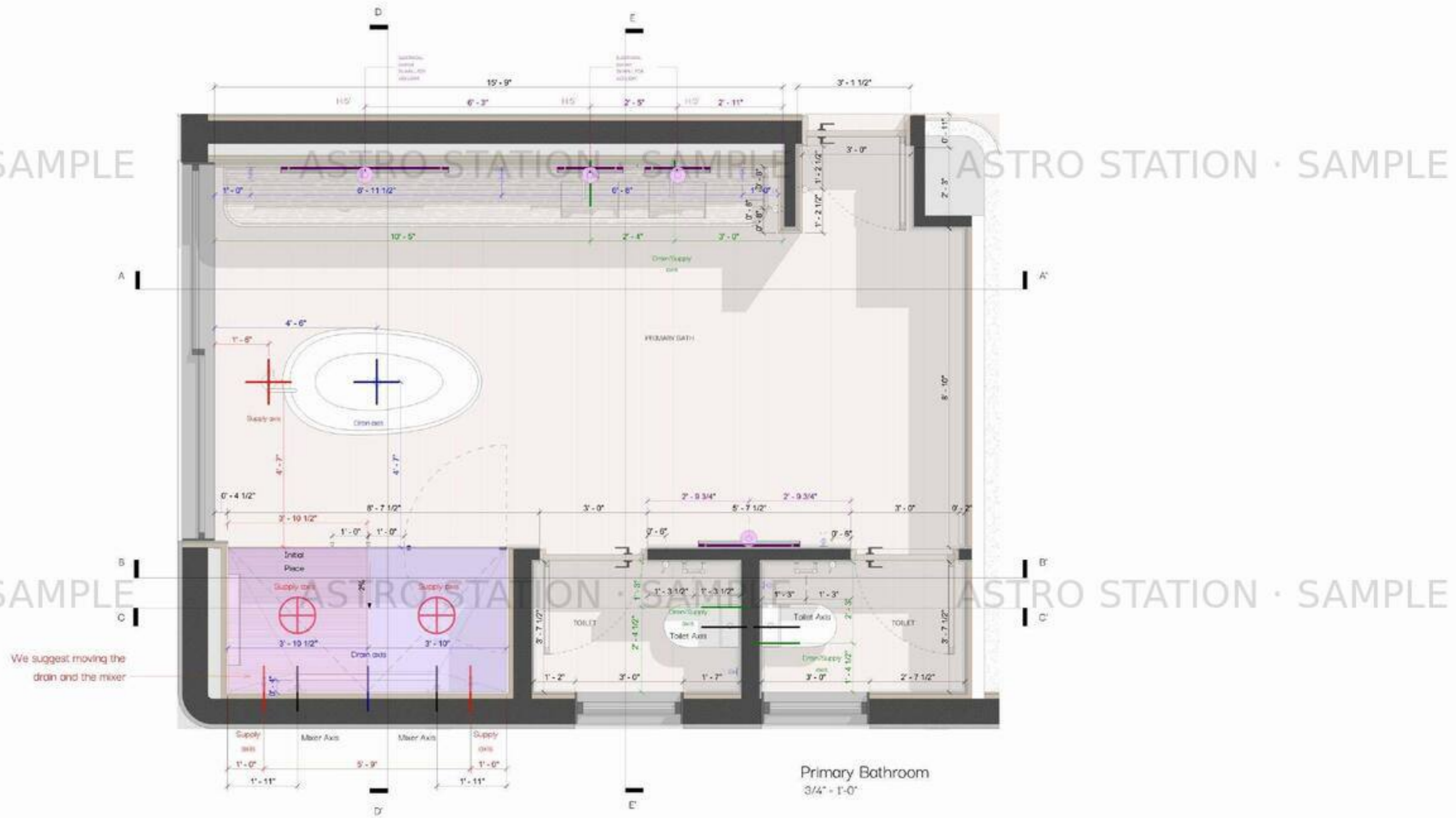
Verify measurements on site

Any modification must be communicated to the design architect, otherwise, this does not have any responsibility about it.

All the structural elements must be previously verified by the calculist to guarantee the resistance and good behavior of the work.

The specifications expressed here are served as a reference and do not have any link or commitment with a predetermined distributor, on the contrary, they are served as the basis to quantify the budget.

This plan cancels the previous one.



**DETAILS**



**NOTE**  
Hidden LED lighting

**SHEET NUMBER**  
D409

Be aware of the following outlets

ICON	NAME
	Electrical Wall Outlet
	Wall Switch
	Wall Light

WALLS-FLOORING			
COLOR	IMAGE	MATERIAL - DESCRIPTION	AREA
		Reference: Anti-Slip Concrete White 48"x48" Supplier: Iberia tiles	38 SF
		Reference: Concrete White 48"x48" Supplier: Iberia tiles	160.00 SF
		Inset modulation piece	



**DATE**

March 27 2026

**PROJECT**

Budha Project

**CONTAINS**

Planters

**SCALE**

As Indicated

**DRAWN BY**

David Castrillon

Maria Ines Bernal

Vanessa Sierra

Andrea Rodriguez

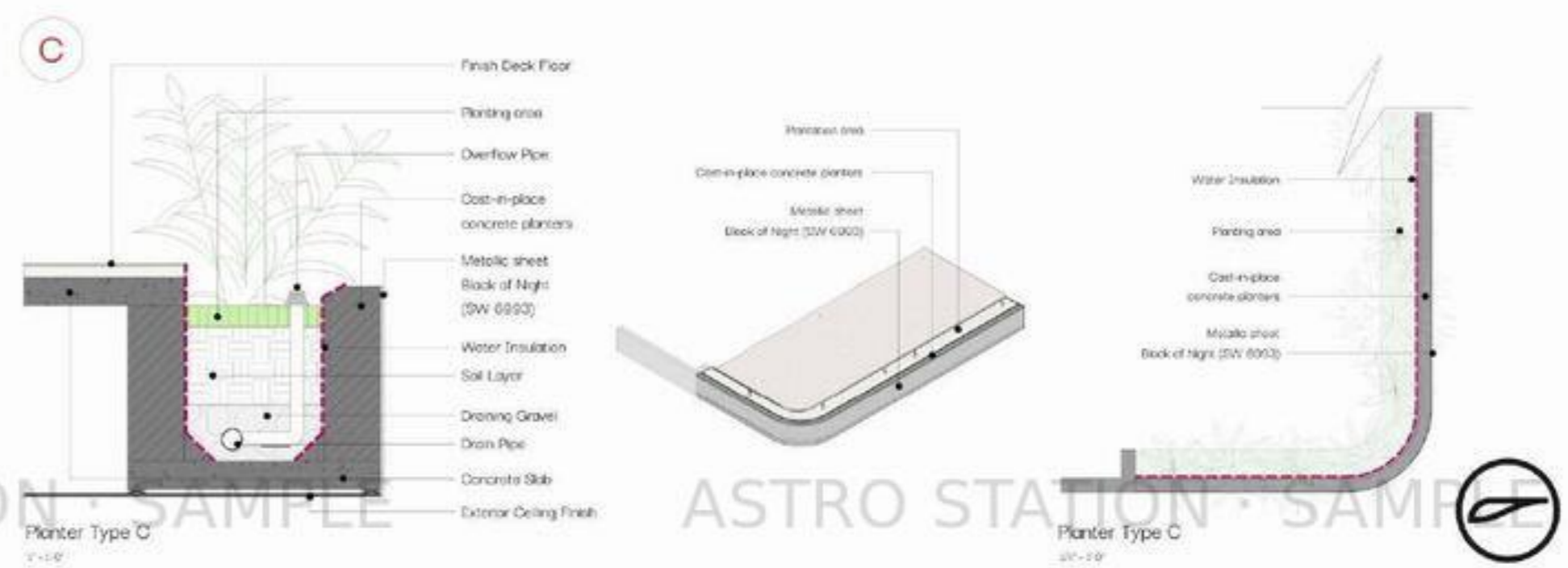
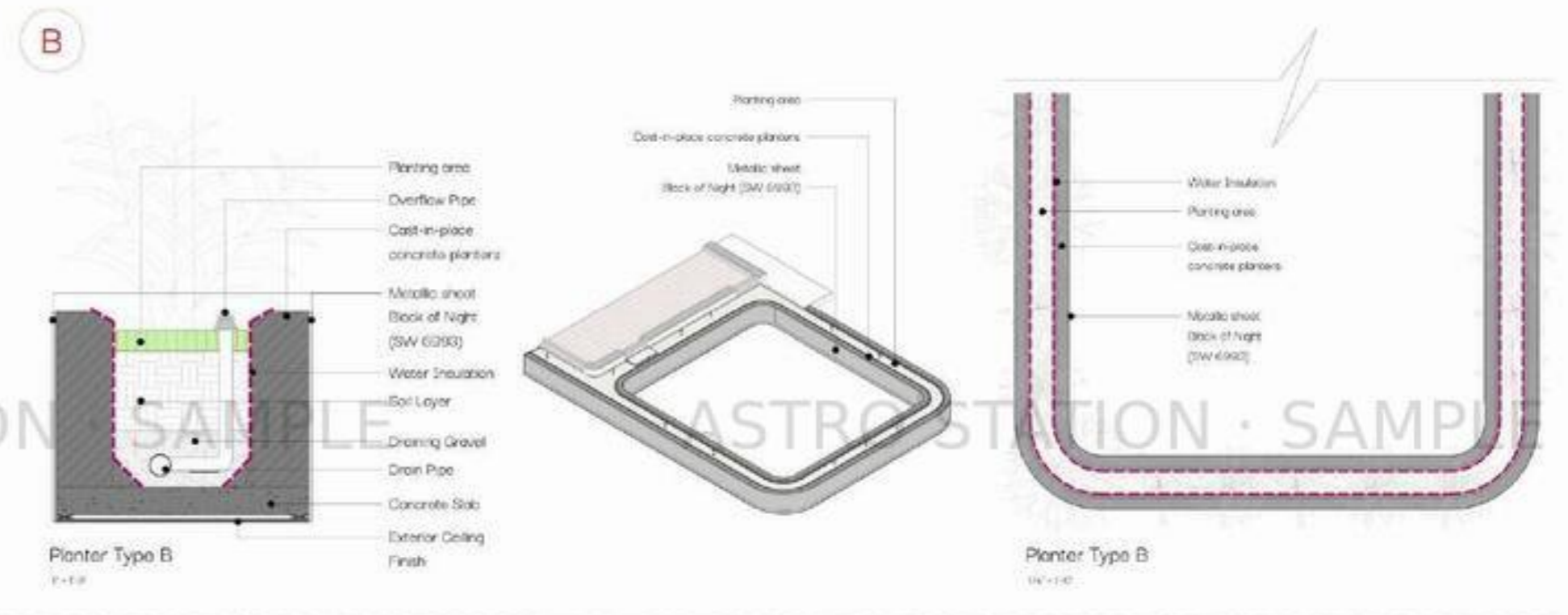
Verify measurements on site

Any modification must be communicated to the design architect, otherwise, this does not have any responsibility about it.

All the structural elements must be previously verified by the calculist to guarantee the resistance and good behavior of the work.

The specifications expressed here are served as a reference and do not have any link or commitment with a predetermined distributor, on the contrary, they are served as the basis to quantify the budget.

This plan cancels the previous one.



**DATE**

March 27 2026

**PROJECT**

Budha Project

**CONTAINS**

Driveway

**SCALE**

As Indicated

**DRAWN BY**

David Castrillon

Maria Ines Bernal

Vanessa Sierra

Andrea Rodriguez

Verify measurements on site

Any modification must be communicated to the design architect, otherwise, this does not have any responsibility about it.

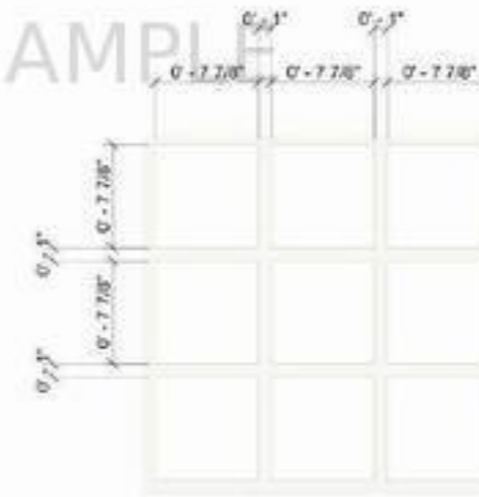
All the structural elements must be previously verified by the calculist to guarantee the resistance and good behavior of the work.

The specifications expressed here are served as a reference and do not have any link or commitment with a predetermined distributor, on the contrary, they are served as the basis to quantify the budget.

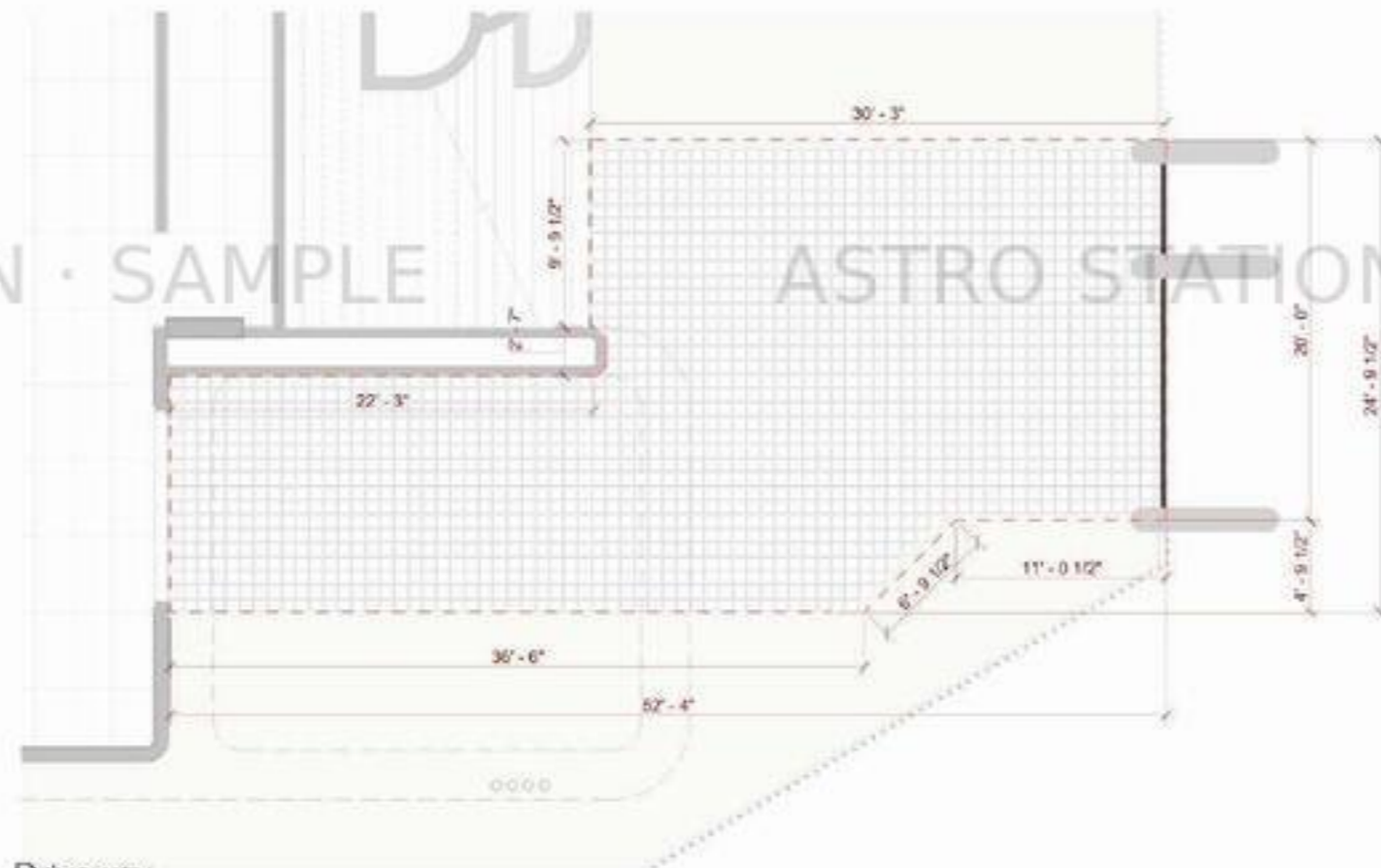
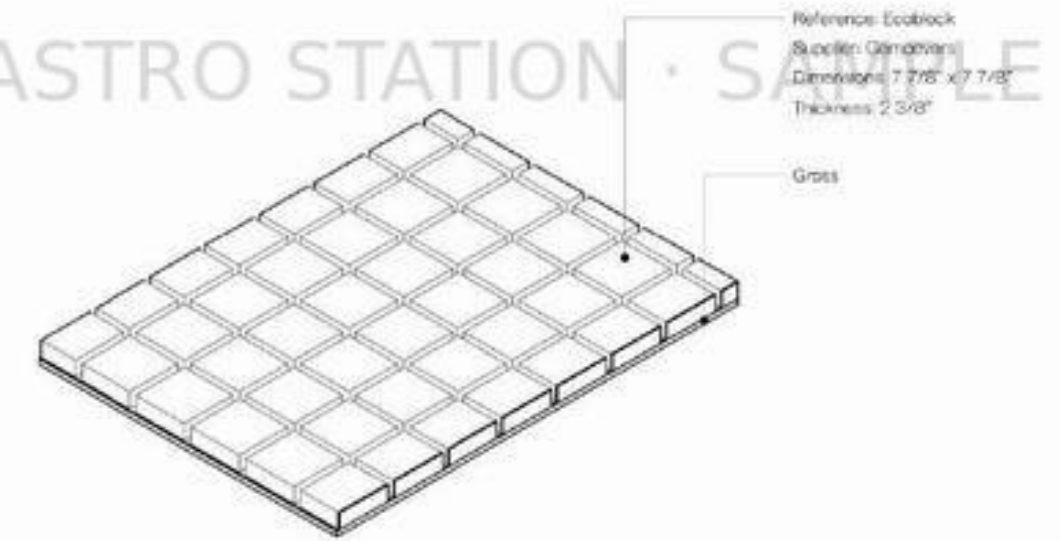
This plan cancels the previous one.



Location  
1/16" = 1'-0"



Driveway  
1 1/2" = 1'-0"



Driveway  
3/16" = 1'-0"



Section  
1 1/2" = 1'-0"



MATERIAL-DESCRIPTION	AREA
Reference Ecoblock Supplier: Gamavani	742 sf



**DATE**

February 04 2026

**PROJECT**

Budaha Project

**CONTAINS**

Vanities Sheet 1/3

**SCALE**

As Indicated

**DRAWN BY**

David Castrillon  
Maria Ines Bernal  
Vanessa Sierra  
Andrea Rodriguez

Verify measurements on site

Any modification must be communicated to the design architect, otherwise, this does not have any responsibility about it.

All the structural elements must be previously verified by the calculist to guarantee the resistance and good behavior of the work.

The specifications expressed here are served as a reference and do not have any link or commitment with a predetermined distributor, on the contrary, they are served as the basis to quantify the budget.

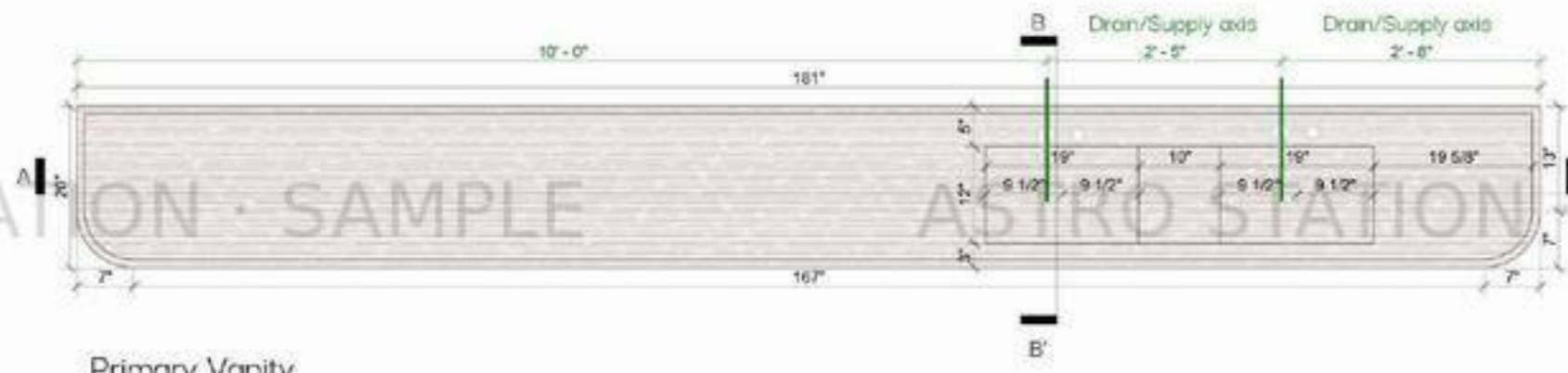
This plan cancels the previous one.

**NOTE:**

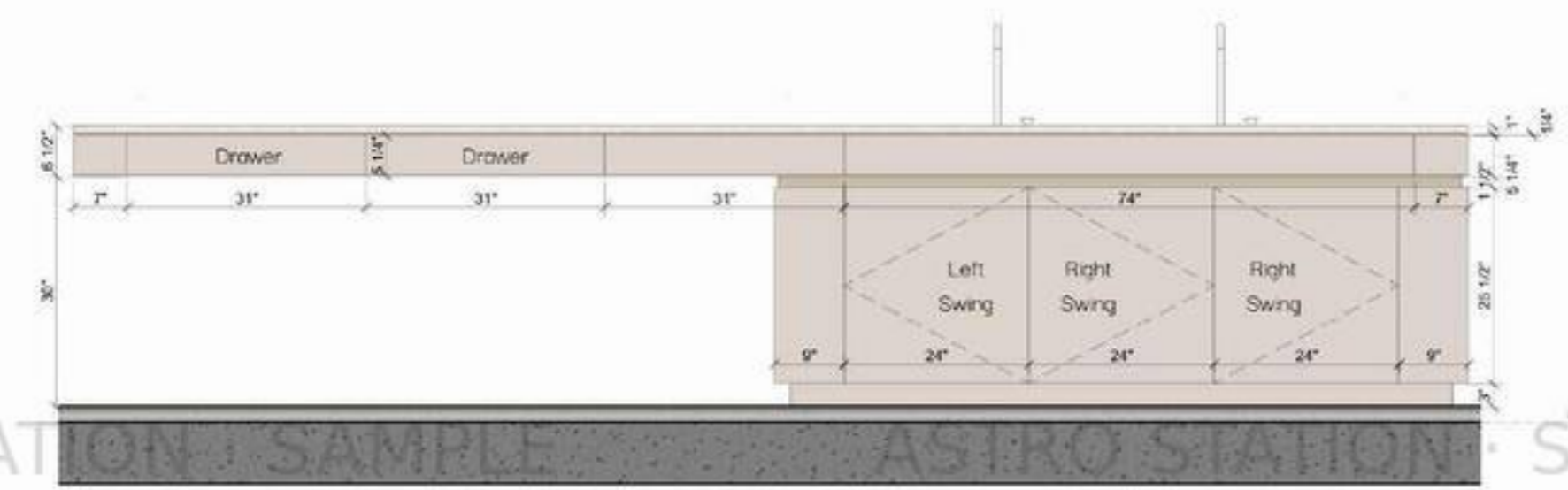
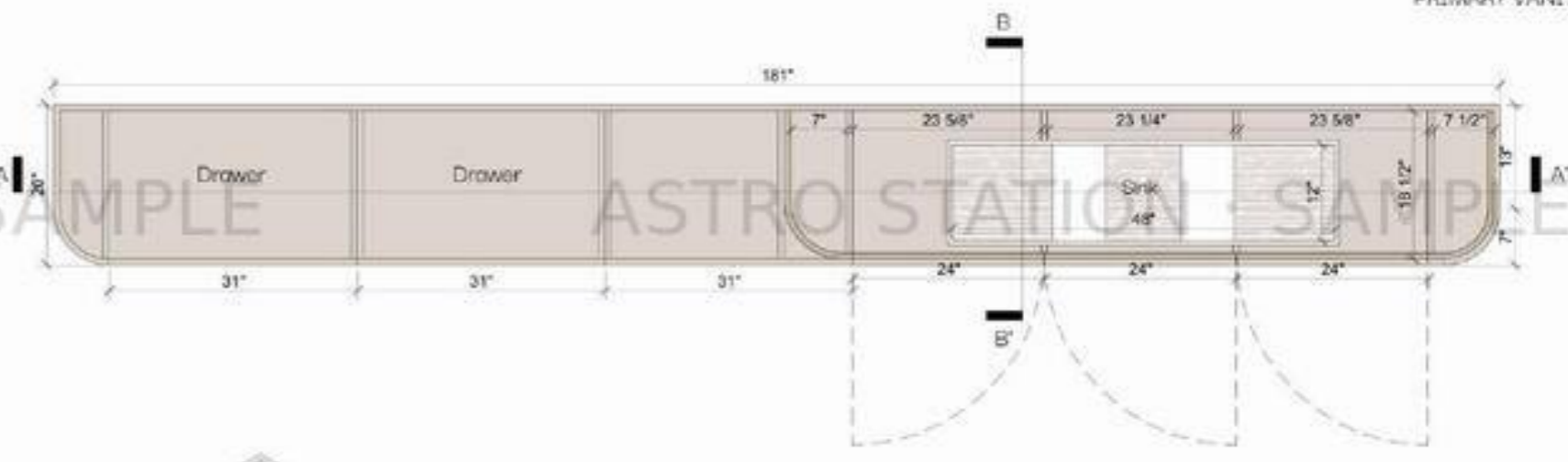


Drawer Opening

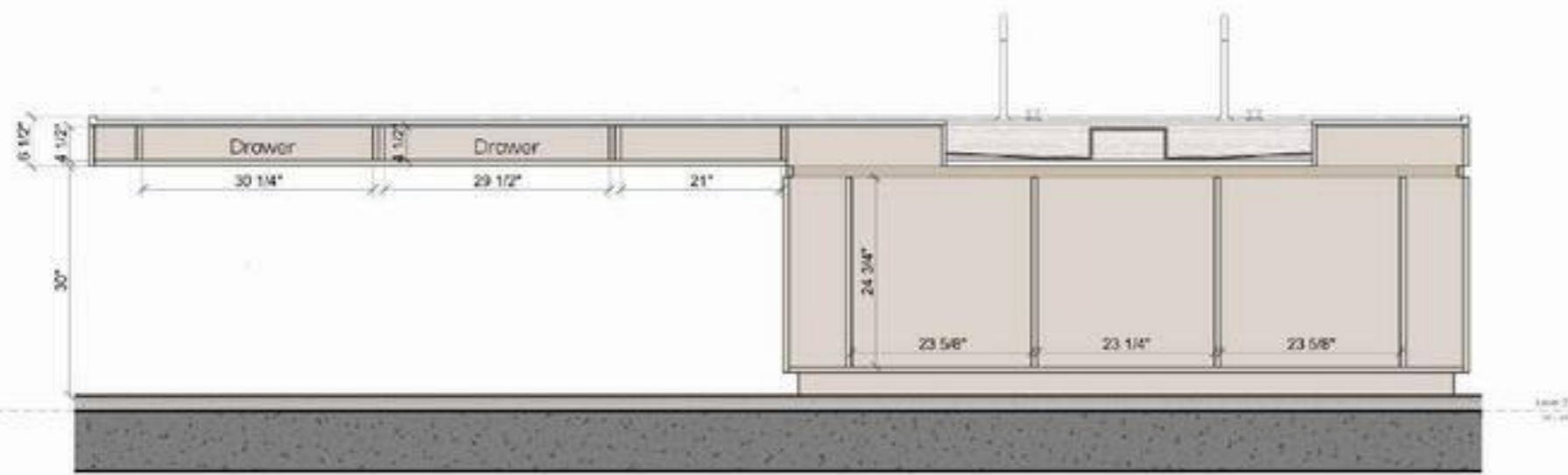
**SHEET NUMBER**  
M522



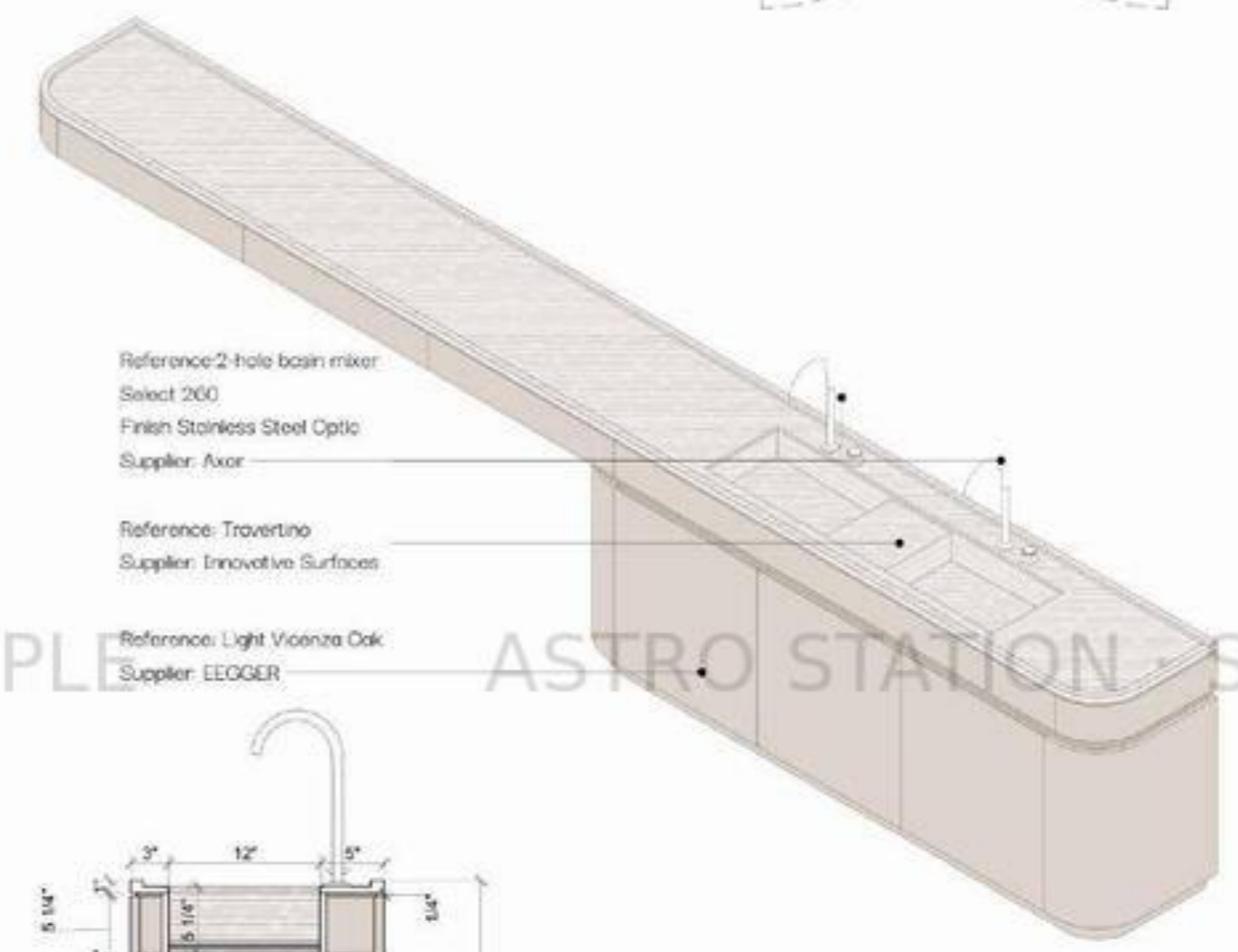
Primary Vanity  
1" = 1'-0"



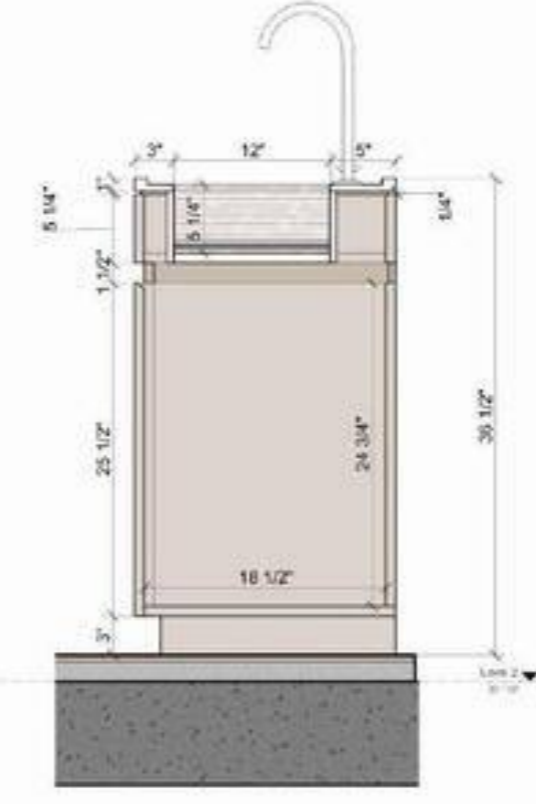
Primary Vanity  
1" = 1'-0"



Section A-A'  
1" = 1'-0"



- Reference: 2-hole basin mixer  
Select 200  
Finish: Stainless Steel Optic  
Supplier: Axor
- Reference: Travertino  
Supplier: Innovative Surfaces
- Reference: Light Vicenza Oak  
Supplier: EEOGER



Section B-B'  
1 1/2" = 1'-0"





**DATE**

March 27 2026

**PROJECT**

Budha Project

**CONTAINS**

Flooring Ground Level & Level 1

**SCALE**

As Indicated

**DRAWN BY**

David Castrillon  
Maria Ines Bernal  
Vanessa Sierra  
Andrea Rodriguez

Verify measurements on site

Any modification must be communicated to the design architect, otherwise, this does not have any responsibility about it.

All the structural elements must be previously verified by the calculist to guarantee the resistance and good behavior of the work.

The specifications expressed here are served as a reference and do not have any link or commitment with a predetermined distributor, on the contrary, they are served as the basis to quantify the budget.

This plan cancels the previous one.



Ground Level Flooring  
18F-101



Level 1 Flooring  
18F-102

FLOORING				
ICON	TYPE	IMAGE	MATERIAL	AREA
	F01		Reference: Bora Oak 6' 2" x 10" Supplier: Yorma	5620 SF
	F02		Reference: Anti-Dip Concrete white 48"X48" Supplier: Bona tiles	115 SF
	F03		Reference: Polished Concrete	1210 SF
	F04		Reference: IPE wood Supplier: Cedro flojo	2050 SF
	F05		Reference: French gray Supplier: Diamond tile	420 SF
	F06		Grass	632 SF
	F07		Reference: Shell floor 24"x48"	4346 SF
	F08		Reference: Cobble Supplier: Gempeters	743 SF



Reference Image



Reference Image



Reference Image

WALLS	
WF04	Reference: Concrete White 48"X48" Supplier: Bona tiles
WF01	Reference: French gray (Walls) Supplier: Diamond tile

DESCRIPTION	
LP	Initial modulation piece
NOTE 1	Guarantee 1/8" of expansion between each piece of both porcelain and ceramic tiles.
NOTE 2	Make leveling mortar lower in showers than the standard mortar in bathroom dry zone for water management.
NOTE 3	All the walls that are finished in paint have a baseboard.
NOTE 4	The veneered walls with wooden verticals and wooden panels do not have a baseboard.

**NOTE:**

Verify measurements on site, none of the previous measurements includes percentage of waste.



DATE

March 27, 2026

PROJECT

Buddha Project

CONTAINS

Fixed Furniture  
Level 2 & Roof

SCALE

As Indicated

DRAWN BY

David Castrillon  
Maria Ines Bernal  
Vanessa Sierra  
Andrea Rodriguez

Verify measurements on site

Any modification must be communicated to the design architect, otherwise, this does not have any responsibility about it.

All the structural elements must be previously verified by the calculator to guarantee the resistance and good behavior of the work.

The specifications expressed here are served as a reference and do not have any link or commitment with a predetermined distributor, on the contrary, they are served as the basis to quantify the budget.

This plan cancels the previous one.

FIXED FURNITURE		
COLOR	DESCRIPTION	UNIT
Light Blue	Kitchen, Party, Laundry, Stg	5
Pink	Vanets	7
Blue	Family, Living, Decks, etc	7
Green	Closets, Walk In Closets	8



Level 2 Fixed Furniture  
3/16" = 1'-0"

ASTRO STATION · SAMPLE

ASTRO STATION · SAMPLE

ASTRO STATION · SAMPLE



ASTRO STATION · SAMPLE

ASTRO STATION<sup>06</sup> · SAMPLE  
Renderings & Visualizations

ASTRO STATION · SAMPLE

ASTRO STATION · SAMPLE

ASTRO STATION · SAMPLE

ASTRO STATION · SAMPLE



ASTRO STATION · SAMPLE

ASTRO STATION · SAMPLE

ASTRO STATION · SAMPLE

AS

PLE

ASTRO STATION · SAMPLE

ASTRO STATION · SAMPLE

ASTRO STATION · SAMPLE

ASTRO STATION · SAMPLE

ASTRO STATION · SAMPLE

ASTRO STATION · SAMPLE



ASTRO STATION · SAMPLE

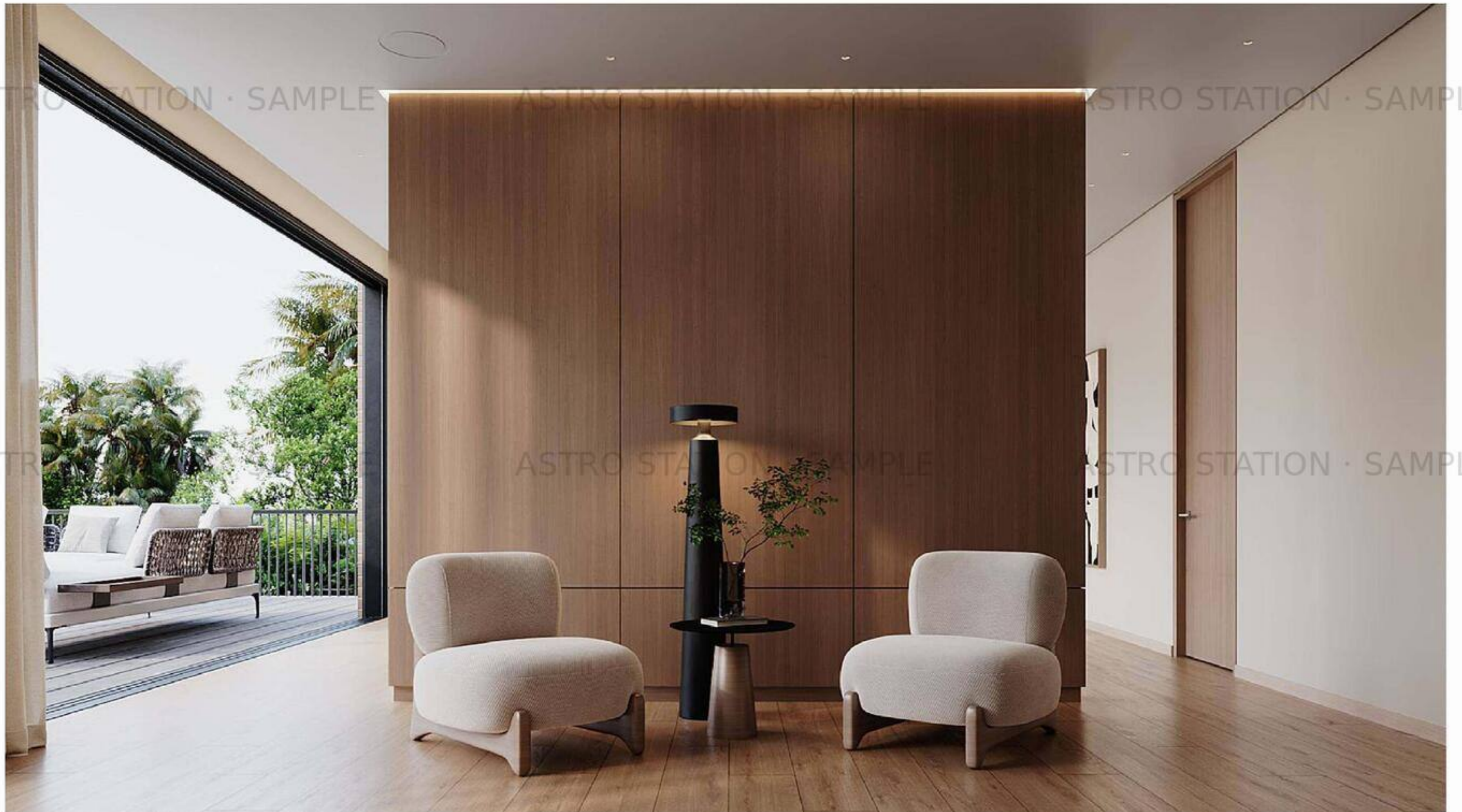
ASTRO STATION · SAMPLE

ASTRO STATION · SAMPLE

ASTRO STATION · SAMPLE

ASTRO STATION · SAMPLE

ASTRO STATION · SAMPLE



ASTRO STATION · SAMPLE

ASTRO STATION · SAMPLE

ASTRO STATION · SAMPLE

ASTRO

ASTRO STATION · SAMPLE

ASTRO STATION · SAMPLE

ASTRO STATION · SAMPLE

ASTRO STATION · SAMPLE

ASTRO STATION · SAMPLE

ASTRO STATION · SAMPLE

ASTRO STATION · SAMPLE

ASTRO STATION · SAMPLE



ASTRO STATION · SAMPLE

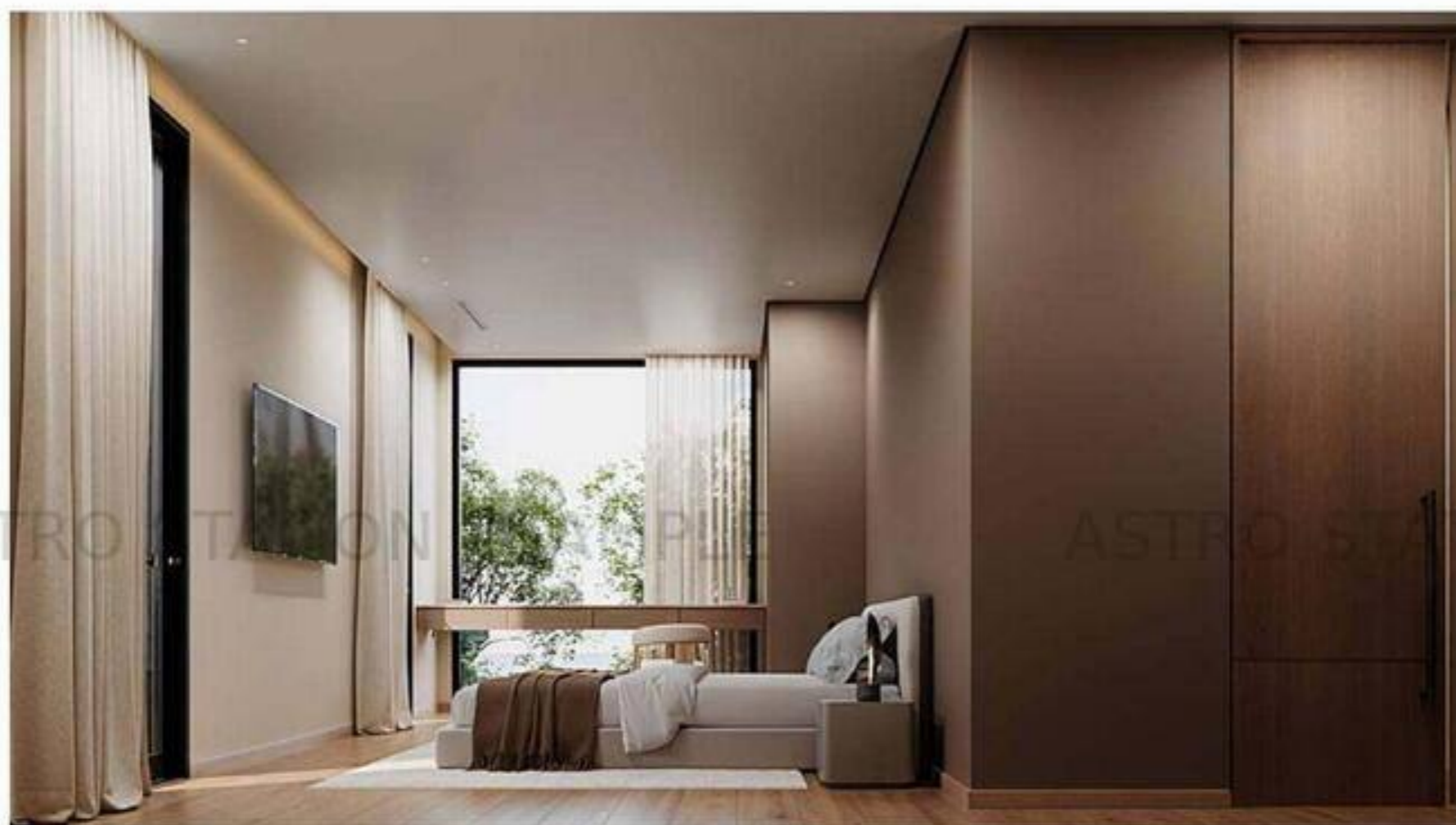
ASTRO STATION · SAMPLE

ASTRO STATION · SAMPLE

ASTRO STATION · SAMPLE

ASTRO STATION · SAMPLE

ASTRO STATION · SAMPLE



ASTRO STATION · SAMPLE

ASTRO STATION · SAMPLE

ASTRO STATION · SAMPLE

ASTRO STATION · SAMPLE

ASTRO STATION · SAMPLE

ASTRO STATION · SAMPLE



ASTRO STATION · SAMPLE

ASTRO STATION · SAMPLE

ASTRO STATION · SAMPLE

BUDDHA PROJECT

ASTRO STATION | 2026

ASTRO STATION · SAMPLE

ASTRO STATION · SAMPLE

ASTRO STATION · SAMPLE